



# NET106

ETHERNET NETWORK COMBINER



**INTERNATIONAL**  
A MEMBER OF THE AMI GROUP

**AMI-TMQ International**

T +61 08 9331 0000  
F +61 08 9314 2929  
sales@ami-tmq.com  
www.ami-tmq.com

## SIMPLIFY YOUR NMEA NETWORK

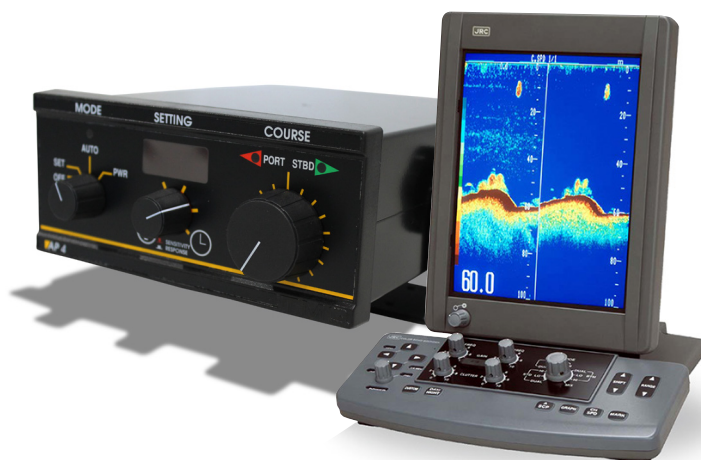
Net106 Ethernet Network Combiner takes multiple NMEA inputs and combines them into a single ethernet output. Manage the network via a browser interface.

## DESCRIPTION:

The Net106 can receive a number of NMEA183 inputs, like gps, heading and temperature, then connect via LAN or WiFi to a computer.

- Manage the setup with a browser interface
- No more serial ports, reliable and simple to install

Connect your Autopilot, Sounder, AIS, GPS and more with your PCs.



## SPECIFICATIONS:

PART NUMBER:	Net106
NMEA CONNECTIONS:	6 inputs/6 outputs
POWER SUPPLY:	12 or 24VDC
ISOLATED POWER:	Required if connected to equipment that doesn't provide opto isolation.
IP RATING:	IP55
TERMINALS:	Quality WAGO® cage clamp, spring loaded terminals for vibration & shock proof terminations

## MECHANICAL:

CABLE GLANDS:	7 x PG9 IP68 Cable glands.
MATERIAL:	Housing & lid material : ABS Lid gasket: Polycarbonate
COLOUR:	Grey RAL 7035
TESTING:	Tested using IEC 61162-1 and IEC 61162-2 conforming equipment
DIMENSIONS:	(W) 200mm x (H) 127mm x (D) 50 mm
MOUNTING:	Mounting: 4x3.5mm lugs Mounting Kit: Stainless Steel screws provided.
WEIGHT:	650g



# NET106

ETHERNET NETWORK COMBINER