



# CPLOT

## Computer based Plotting System

Available in multiple versions, CPLOT is a reliable and easy to use computer-based chart plotting system designed for both recreational and professional applications.

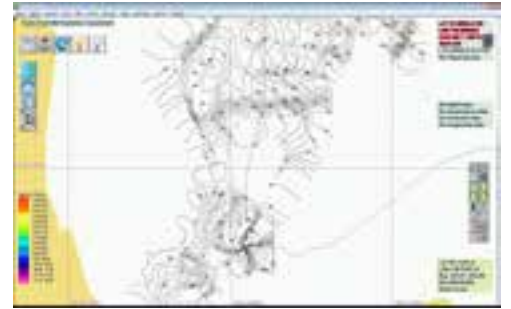


**INTERNATIONAL**  
A MEMBER OF THE AMI GROUP



## Ideal for professional and recreational mariners

The simple to use system featuring highly accurate depth and bathymetric data.



### THREE AVAILABLE MODELS



#### CPLLOT Nav+

Integrated with Navionics Chart software



#### CPLLOT CMAP

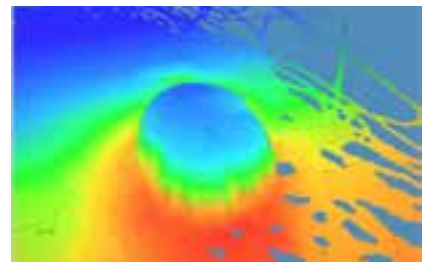
Integrated with CMAP chart software



**FREE TRIAL**

#### CPLLOT 3D

Display seabed features and analyse in realtime 3D for accurate conditions from below your vessel.



### BASIC CPLLOT SYSTEM

GPS  
(Available separately)



Computer  
(not included)



CPLLOT CD



Chart Card or CD



USB Dongle



# TMQ C-Plot is a sophisticated and reliable computer based chart plotting program designed for both recreational and professional applications.

## FEATURES

**Display:** The screen displays all navigational data overlaid on a user-selected chart with a GPS input, the vessel's position, speed and heading are displayed. Using NMEA 0183 compatible equipment, depth, temperature, heading and AIS targets can be displayed and stored to enhance navigation data.

**Track:** Indicates historical information on vessels' past movement. Track points can be recorded by user-defined distance or time intervals. C-Plot Nav+ offer 16 user-defined colours for vessel track, depth and temperature.

**Assisted Routing:** By simply selecting two points, C-Plot Nav+ will calculate a safe and navigable route for you to follow. (Only available outside the USA)

**User Data:** Routes, marks and events can be added easily by either point and click or menu function. Since C-Plot Nav+ is a computer-based system, the amount of user and navigation system stored is only limited by the computer hard drive capacity

**Range and Bearing:** Controlled by the cursor, C-Plot Nav+ provides navigational information such as the bearing and distance between

two points or between your vessel and a fixed point.

**Closures:** C-Plot Nav+ allows the user to load and display files from other mapping systems. These files can be closures or restricted areas or SAR patterns.

**3D Seabed Mapping:** C-PLOT 3D (optional extra) is a comprehensive three-dimensional mapping tool that shows you exactly what is happening beneath your vessel. View the seabed, fishing hot spots and underwater conditions all in an animated 3D landscape.



All Navigation data overlaid



Enhance with GPS input for additional readings



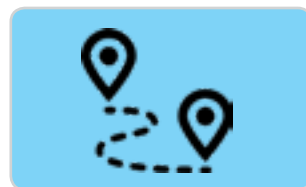
Stores historical data for past movements



Store routes, marks and waypoints



Load or display map files from other systems



Shows range and bearing between two selected way points



Extend with CPlot 3D for seabed mapping capabilities



Highly accurate bathymetry data for locating potential fishing spots

## CONNECTIVITY OPTIONS

Radar



Sounder



Autopilot



AIS



Piscatus



## USER REQUIREMENTS

OPERATING SYSTEM:	Intel Powered® Microsoft Windows Operating System. Windows 7, 8 & 10 compatible, Windows Vista	PERIPHERALS:	Mouse or other pointing device.
		INTERNET ACCESS:	Required for installation and updates
		ETHERNET:	Ethernet UDP (hardware required)
SERIAL PORTS:	2 USB Serial Ports (recommended) 1 Serial Port (recommended)		

## SPECIFICATIONS

CONNECTIVITY:	C-Plot Nav+ can be integrated via standard NMEA 0183 to radar for ARPA target, sounder for temperature and depth, autopilot for route steering and AIS target information including other vessel name and MMSI number.
CHARTS:	C-Plot Nav+ supports Navionics+ cartography, providing flexible charting with constant updates. Just select an area of coverage within your region and download the required chart data to your card. You can download updates or new areas at any time during the following 365 days.
NETWORK:	Input Data NMEA 0183   Output Data NMEA 0183

## OTHER ACCESSORIES



Net106 Ethernet Network Combiner takes multiple NMEA inputs and combines them into a single Ethernet output. Manage the network via a browser interface.

Extend your NMEA network to include extra outputs with TMQ's NMEA Buffer. Simple system setup with minimal installation requirements.



**INTERNATIONAL**  
A MEMBER OF THE AMI GROUP

**AMI-TMQ International**

T +61 08 9331 0000 | F +61 08 9314 2929  
sales@ami-tmqr.com | www.ami-tmqr.com